

INNER FORTH LANDSCAPE INITIATIVE VISIONS TO ACTIONS

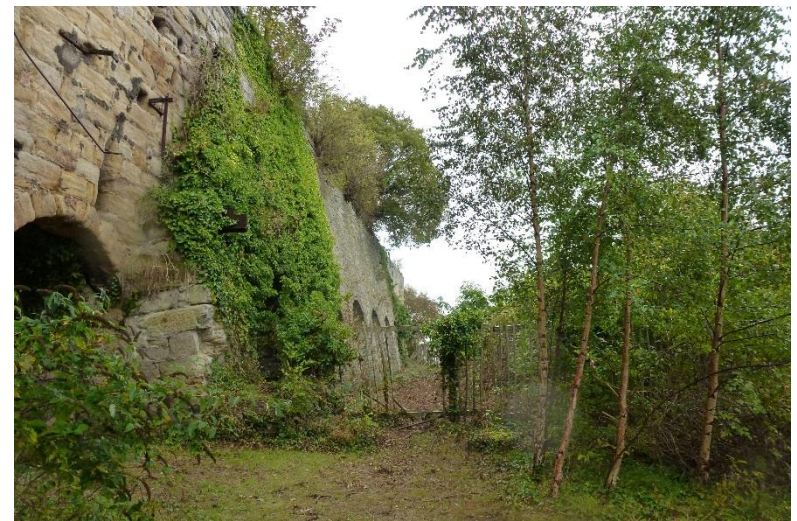
WORKING ON & OFF THE HES ESTATE TO CONSERVE BUILT HERITAGE.



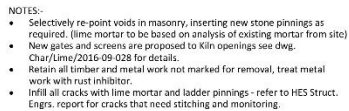
CHARLESTOWN LIMEKILNS, KENNETPANS DISTILLERY, CLACKMANNAN TOWER

CHARLESTOWN LIMEKILNS

INNER FORTH LANDSCAPE INITIATIVE - CONSOLIDATION



Proposed Elevations

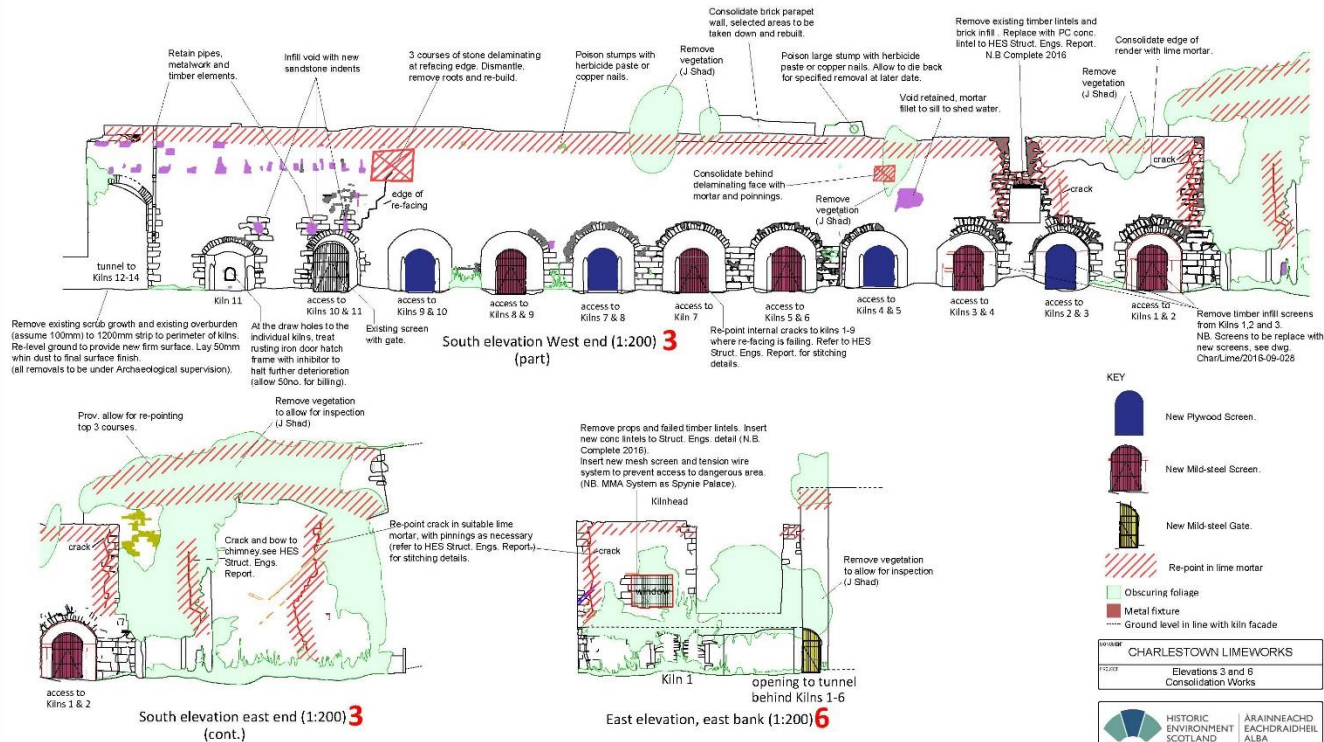


© Historic Environment Scotland - Scottish Charity No. 6045125

CHARLESTOWN LIMEKILNS

INNER FORTH LANDSCAPE INITIATIVE - CONSOLIDATION



Proposed Elevations



NOTES:-

- Selectively re-point voids in masonry, inserting new stone pinnings as required. (lime mortar to be based on analysis of existing mortar from site)
- New gates and screens are proposed to Kiln openings see dwg. Char/Lime/2016-09-028 for details.
- Retain all timber and metal work not marked for removal, treat metal work with rust inhibitor.
- Infill all cracks with lime mortar and ladder pinnings - refer to HES Struct. Engrs. report for cracks that need stitching and monitoring.

CONTRACT/SMC

CHARLESTOWN LIMEWORKS	
PROJECT	Elevations 3 and 6 Consolidation Works
 	
PROJECT DRAW NO: Char/Lime/2016-09-027	
DATE	1:200 @ A3
DATE	July 2016
DESIGNER	DMBorthwick
DRAWN BY	BT Pringle

© Historic Environment Scotland. Scottish Charity No. SC045725

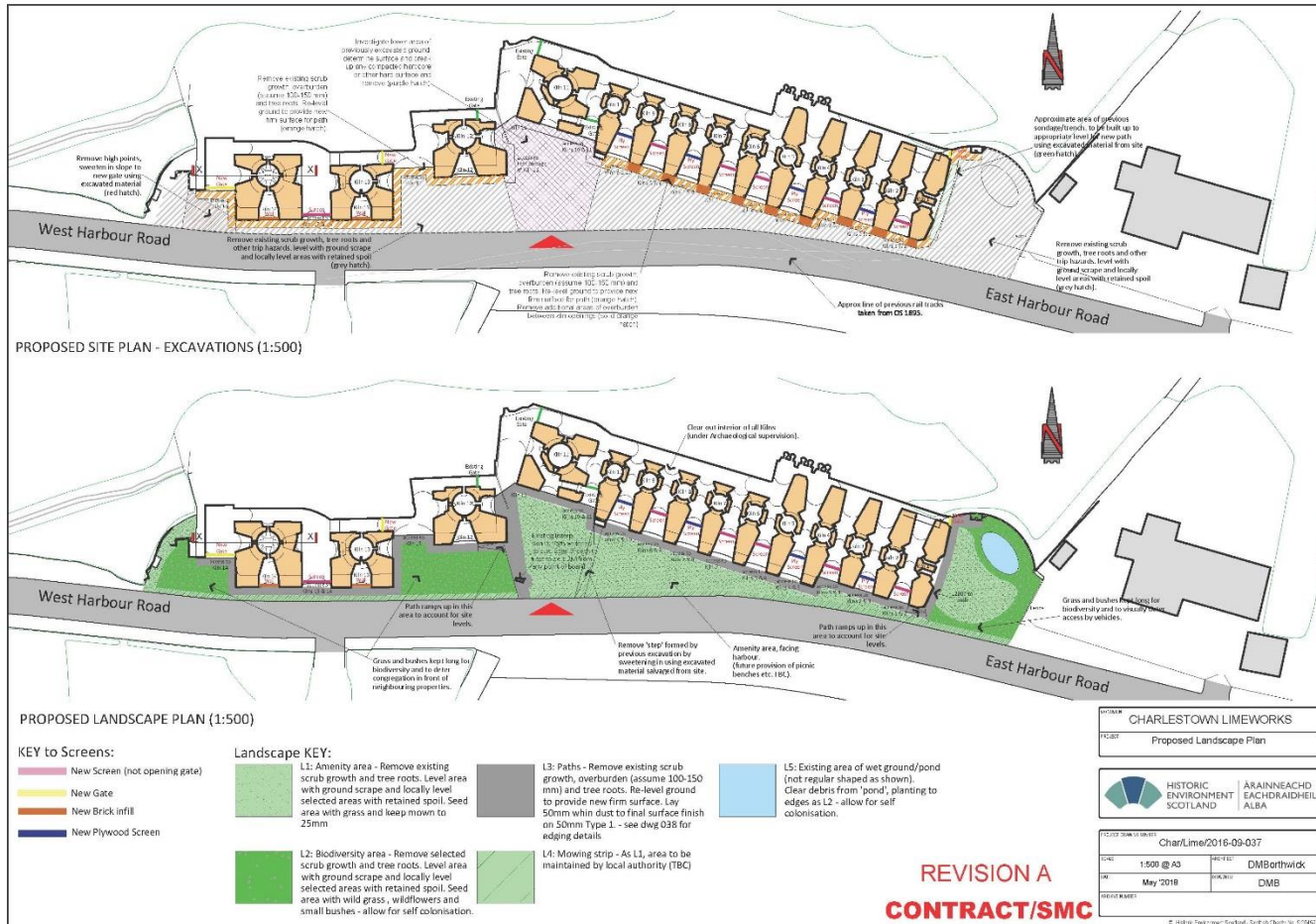


HISTORIC
ENVIRONMENT
SCOTLAND

ÀRAINNEACHD
EACHDRAIDHEIL
ALBA

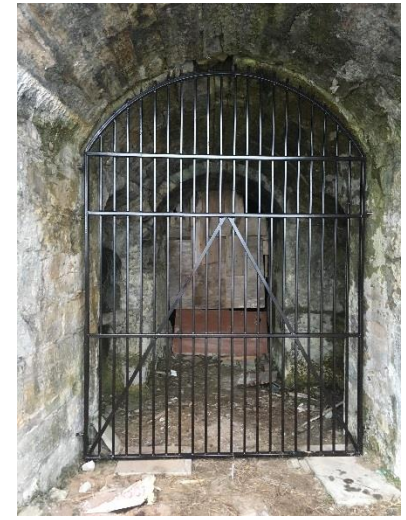
CHARLESTOWN LIMEKILNS

INNER FORTH LANDSCAPE INITIATIVE - CONSOLIDATION



CHARLESTOWN LIMEKILNS

INNER FORTH LANDSCAPE INITIATIVE - CONSOLIDATION



KENNETPANS DISTILLERY

INNER FORTH LANDSCAPE INITIATIVE - CONSOLIDATION

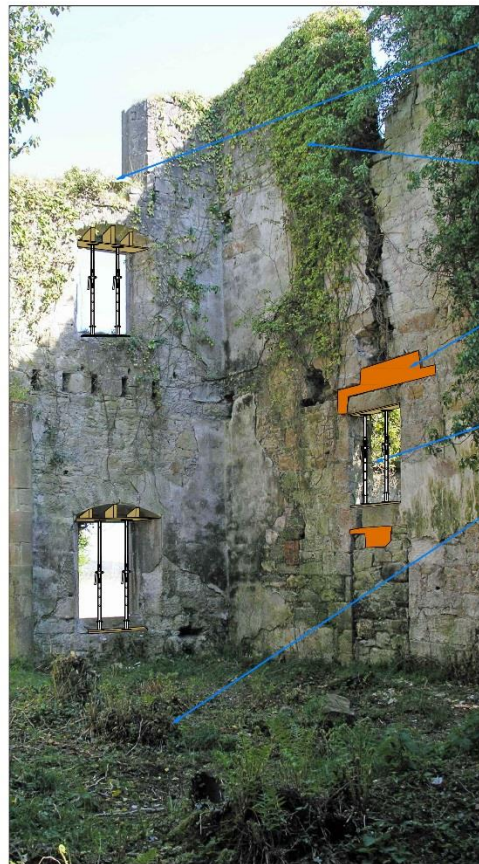


KENNETPANS DISTILLERY

INNER FORTH LANDSCAPE INITIATIVE - CONSOLIDATION



Interior of Distillery - As Existing (NTS)



Interior of Distillery - Structural Propping (NTS)

Carefully remove any loose masonry at wallhead level that are likely to dislodge and fall. Number stones and record position photographically to aid with accurate rebuilding in future phase of work.

Remove ivy and other vegetation using Mobile Elevated Work Platform (MEWP) to allow safe access at high levels. Cut vegetation back to within 300mm of the wall to expose the masonry surface. Cut a series of horizontal and vertical cuts through the remaining stems, in a grid pattern of 500mm spacing, using secateurs, to ensure most sources of moisture are eliminated. Where ivy is rooted into the masonry this should be left to die back entirely and on no account should attempts be made to pull roots out of the masonry. Apply herbicide paste to the cut ends.

Infill voids above and below openings, as required, with clay bricks and a weak-mix lime mortar, to allow for structural propping. Brickwork is temporary, intended to be easily reversible and will be in place to stabilise structure whilst decisions are taken on extent of rebuilding/stone indenting required for Phase 2.

Insert Acro props to all window and door openings to stabilise structure sufficiently to allow for safe removal of vegetation from walls. Scaffold boards to be used to provide platforms for props. Arched openings to be propped with timbers above.

Clear vegetation from ground within monument and selectively cut back stumps to allow safe access of Mobile Elevated Work Platform (MEWP) for propping and vegetation works.



CLIENT	KENNETPANS DISTILLERY	
PROJECT	Phase 1 Structural Propping & Vegetation Clearance	
	<div> <div>HISTORIC ENVIRONMENT SCOTLAND</div> <div>ÀRAINNEACHD EACHDRAIDHEIL ALBA</div> </div>	

PROJECT DRAWING NUMBER	KPans/003	
SCALE	NA	ARC PECT D Borthwick
DATE	Sep 2016	DRAWN BY DMB
ARCHITECT		

© Crown Copyright



HISTORIC ENVIRONMENT SCOTLAND

ÀRAINNEACHD EACHDRAIDHEIL ALBA

KENNETPANS DISTILLERY

INNER FORTH LANDSCAPE INITIATIVE - CONSOLIDATION

Proposed Elevations

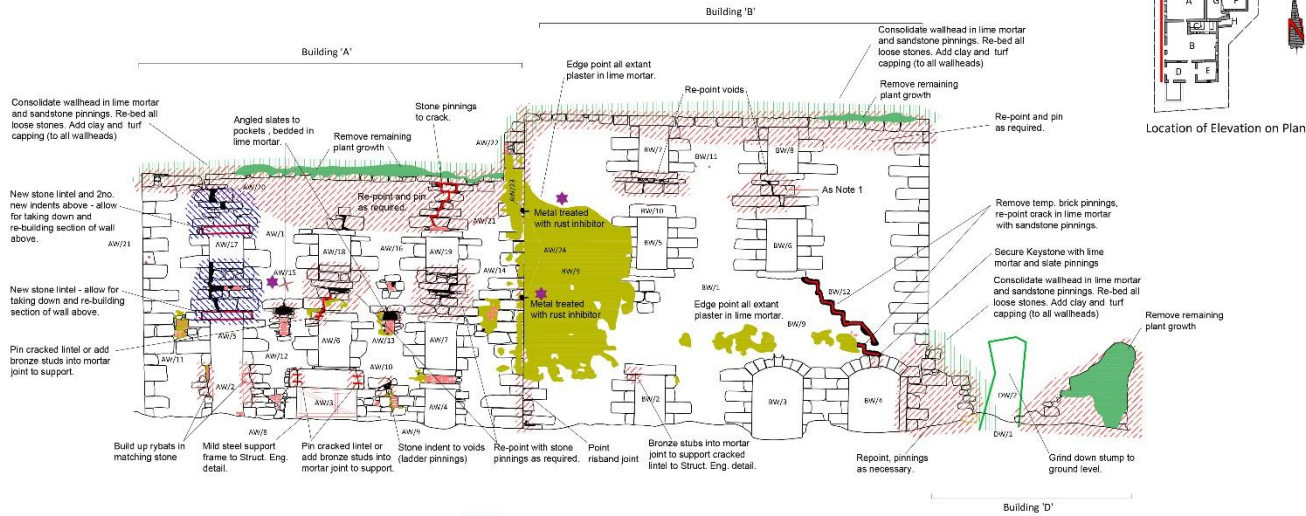
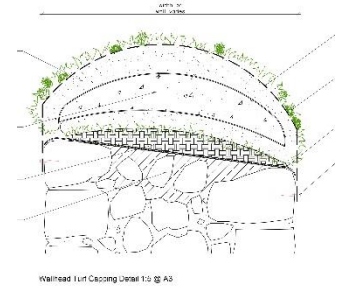
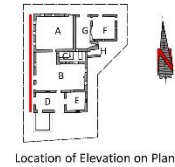


Fig 18 Buildings A, B and D, West Exterior Elevation (1:100)

- NOTES:
- Selectively re-point voids in masonry, inserting new stone pinnings as required (lime mortar to be based on analysis of existing mortar from site).
 - Retain all timber and metal work not marked for removal, treat metal work with rust inhibitor.
 - Infill all cracks with lime mortar and ladder pinnings- refer to Struct. Engrs. notes for cracks that need stitching and monitoring.

- Inspect wallheads. Allow prov. sum for angled rough racking. Allow prov. sum for soft capping.
- Re-point in lime mortar with stone pinnings as required
- Allow for taking down and re-building section of wall
- Debris to be cleared.

- Treat all extant metalwork with rust inhibitor.
- Brick
- Timber
- Obscuring foliage (removed)
- Render/repointing obscuring features
- Gap in stonework
- Void
- Render (Edge point)
- Metal fixture (rust inhibitor)
- Ground level in line with kiln facade



NB - Remove all temp props on completion

Residual Risks:-

A. Working at height - Scaffolding required

BILLING and SMC

KENNETPANS DISTILLERY

Buildings A, B and D, West Exterior Elevation

HISTORIC ENVIRONMENT SCOTLAND

ÀRAINNEACHD EACHDRAIDHEIL ALBA

PROJECT/WORK NUMBER: KPANS/2017/002

DATE: 1:100 @ A3

DRAWN BY: DMBorthwick

CHECKED BY: BTPringle

DATE: Feb 2017

© Historic Environment Scotland - Scottish Charity No. 0045020

INNER FORTH LANDSCAPE INITIATIVE



HISTORIC ENVIRONMENT SCOTLAND

ÀRAINNEACHD EACHDRAIDHEIL ALBA

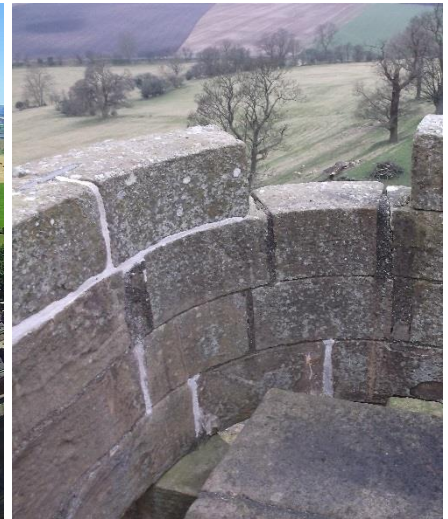
KENNETPANS DISTILLERY

INNER FORTH LANDSCAPE INITIATIVE - CONSOLIDATION



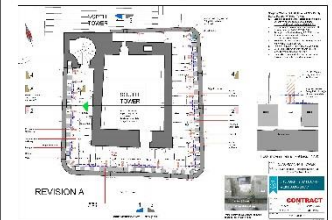
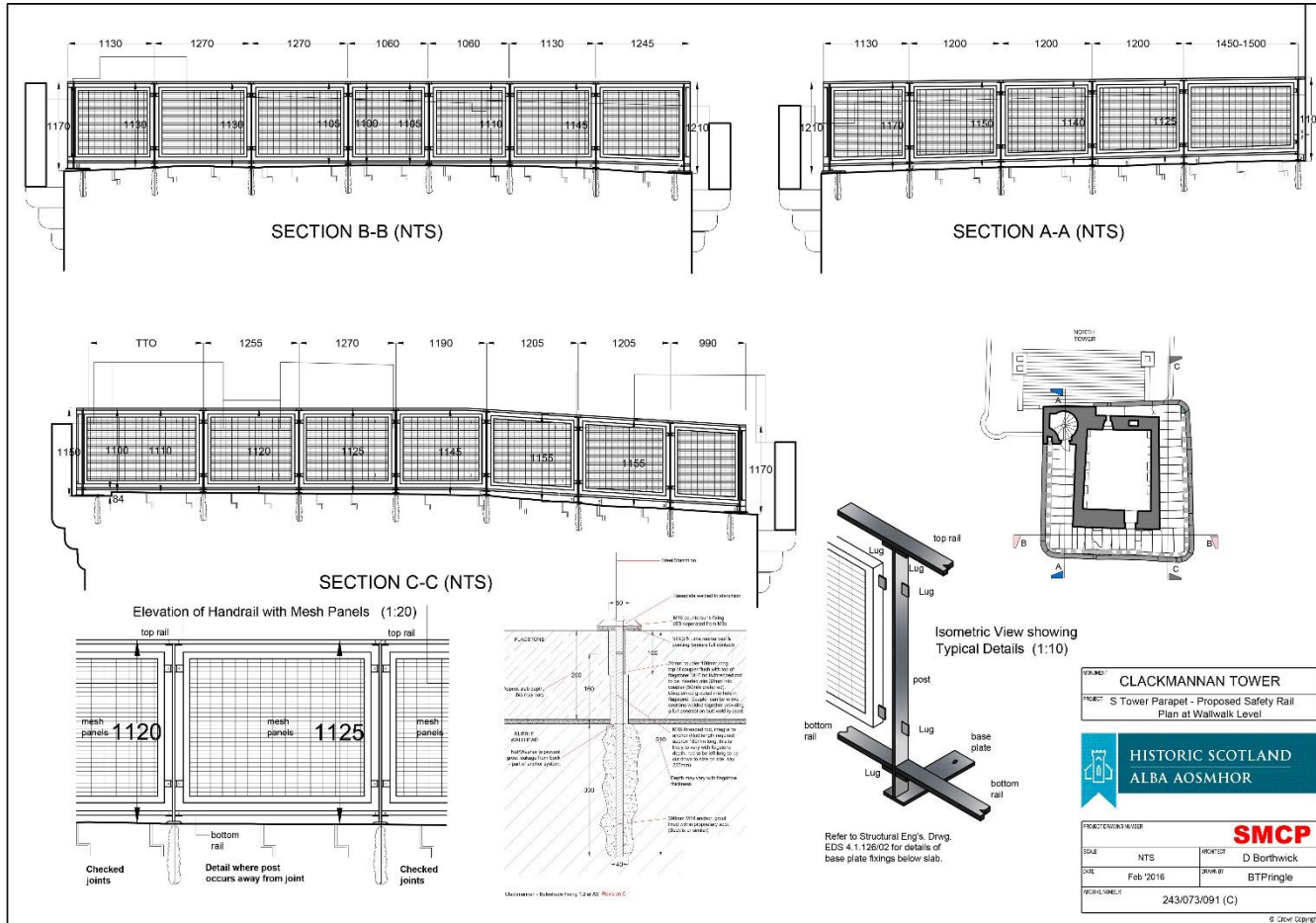
CLACKMANNAN TOWER

INNER FORTH LANDSCAPE INITIATIVE – LIGHTING & BARRIERS



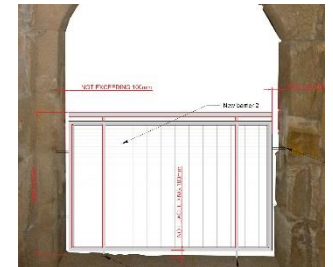
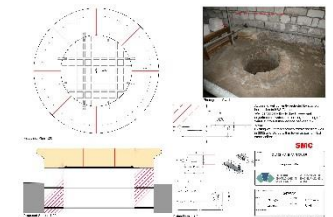
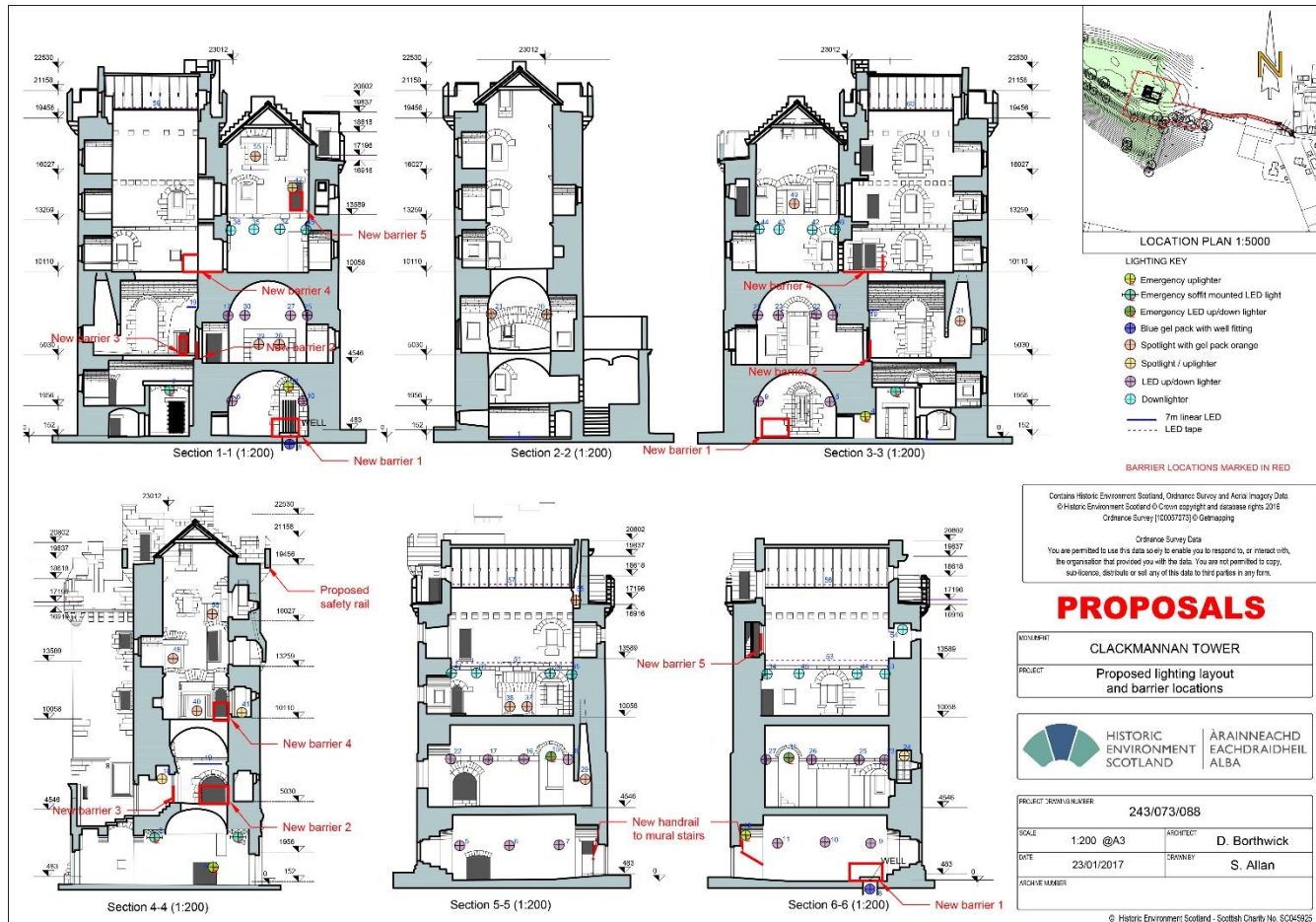
CLACKMANNAN TOWER

INNER FORTH LANDSCAPE INITIATIVE – LIGHTING & BARRIERS



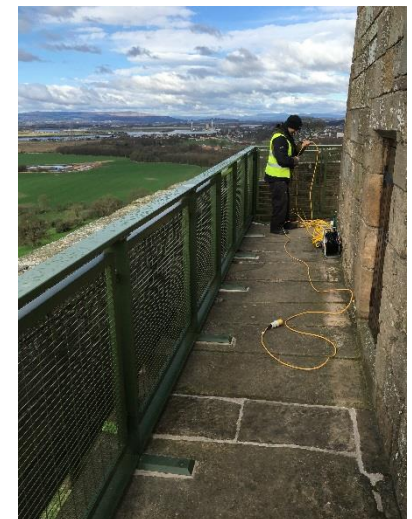
CLACKMANNAN TOWER

INNER FORTH LANDSCAPE INITIATIVE – LIGHTING & BARRIERS



CLACKMANNAN TOWER

INNER FORTH LANDSCAPE INITIATIVE – LIGHTING & BARRIERS



CLACKMANNAN TOWER

INNER FORTH LANDSCAPE INITIATIVE – LIGHTING & BARRIERS

