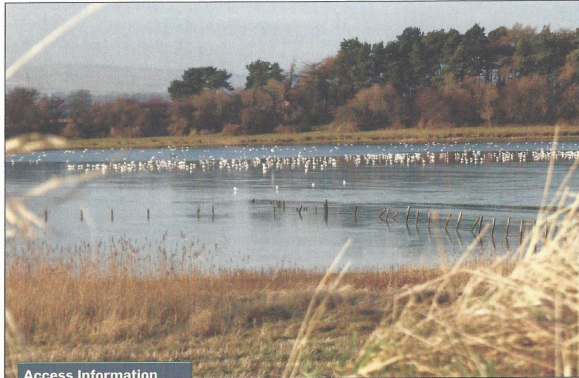


8. Skinflats circular



Access Information

Bus: For information on bus times, numbers, routes call Traveline 0871 200 2233 or visit www.traveline.org.uk

Train: No

Cycle: on road Sustrans route 76 nearby

Parking: Limited car parking on Newton Road. (Keep access clear at all times.)

Distance: 3.6 miles [5.8 km]

Path information: The first and last section is tarmac road with woodland and farm vehicle tracks which can be muddy in sections.

Facilities: None.

The village of Skinflats lies on the A905 and is situated in the original parish of Bothkennar whose boundary lay between the River Carron to the South and Pow Burn to the North. The original village built between 1817 - 1881 consisted of two rows of miner's cottages, two pubs, a smiddy and school which was situated at the Northern end of the village where the existing school is today.

A prominent family of that time were the Bruce of Newton who were related to the Bruce family of Airth. Bothkennar Church displays a stone showing a date 1654, initials WB (William Bruce) and Bruce of Newton arms.

Skinflats foreshore has some of the rarest habitats in the UK namely that of

the saline lagoons. There are two areas of lagoons in the Falkirk area; Skinflats and Kinneil Kerse.

The River Carron was canalised 1767 - 1770 to allow boats to reach Quarrel shore, now Carronshore.

The lagoons at Skinflats are associated with meanders of the River Carron and have been vulnerable to change through human activity.



The saline lagoons are one of the rarest habitats in the UK and support a large range of specialist plants, invertebrates and animals which are able to cope with fluctuations of salinity and changing water levels. The margins also support songbirds during the winter months, and the lagoons provide a valuable roosting site for wildfowl at high tide when they are unable to feed on the neighbouring rich mudflats.

For these reasons Skinflats Foreshore is protected by the Firth of Forth Site of Special Scientific Interest (SSSI) and Firth of Forth Special Protected Area (SPA).

Finding your way

START: at small lay-by barrier on Newton Road.

1. Pass by the road barrier and follow the road which

runs adjacent to the River Carron.

2 When you approach the conifer woodland, turn left and follow the sign along the woodland edge. Alternatively you can continue along the road which will bring you out near the mud flats, a very rich feeding area for resident and wintering wildfowl.

3 Re trace your steps back to the woodland and pass through the kissing gate. As you walk along the pine woodland edge look out for the brackish ponds on your right. The pine woodland has been planted on top of the slag heaps from the area's mining past.

4 At the end of the woodland continue through the kissing gate

crossing an open area of grazing for cattle. You can still see the parallel tracks made by the mineral railway.

5 Continue along the track between hawthorn hedges and exit through the kissing gate where you then turn left.

6 Continue along the farm track. From the track and to your left look out for a small orchard of apples and pears.

7 At the end of the track you will come to a field gate. Turn left and continue along the roadside until you return to the start.

Source: *Walk, Ride and Cycle in and around Airth Parish*

Falkirk Council



Falkirk Council

